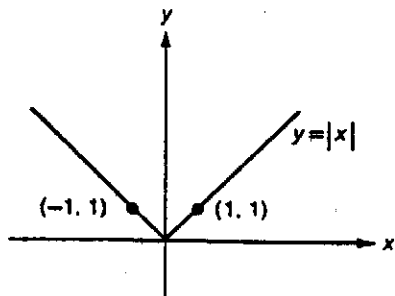
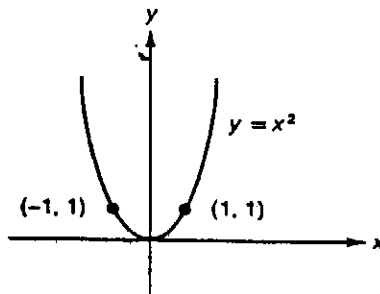


"PARENT" GRAPHS

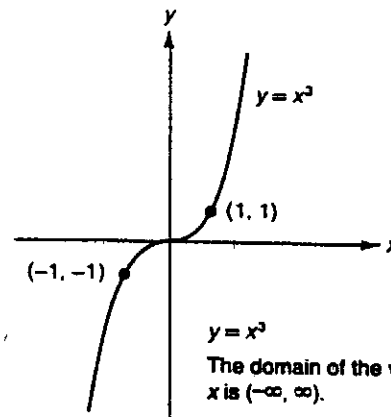
MEMORIZE THESE!!!



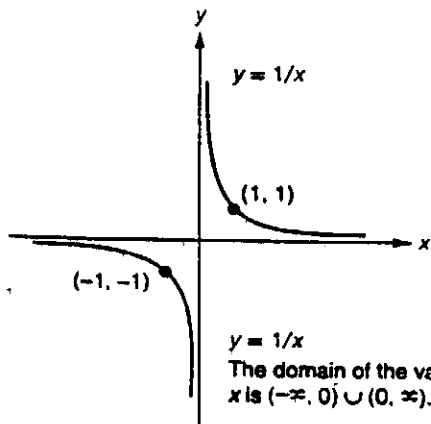
$y = |x|$
The domain of the variable x is $(-\infty, \infty)$.



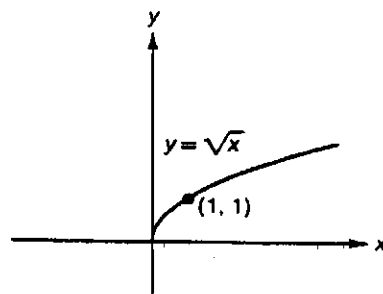
$y = x^2$
The domain of the variable x is $(-\infty, \infty)$.



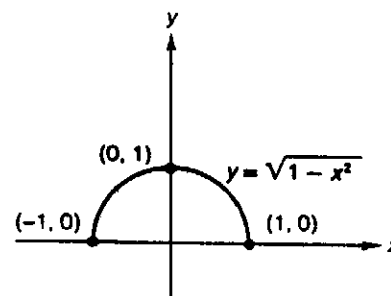
$y = x^3$
The domain of the variable x is $(-\infty, \infty)$.



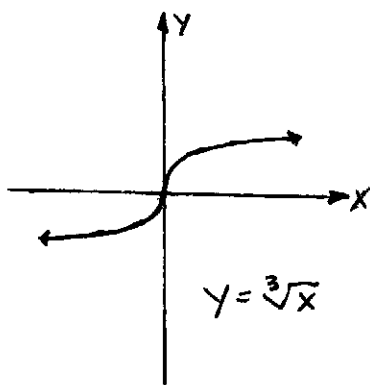
$y = 1/x$
The domain of the variable x is $(-\infty, 0) \cup (0, \infty)$.



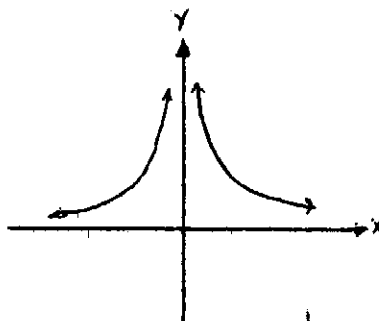
$y = \sqrt{x}$
The domain of the variable x is $[0, \infty)$.



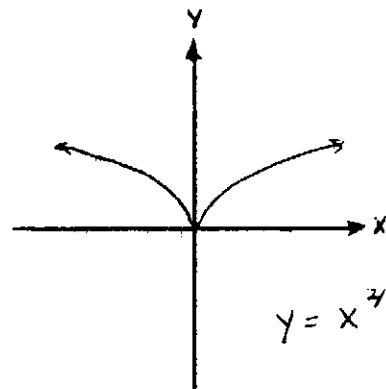
$y = \sqrt{1 - x^2}$
The domain of the variable x is $[-1, 1]$.



$y = \sqrt[3]{x}$



$y = \frac{1}{x^2}$



$y = x^{2/3}$